

PAPER MODEL SHEET
RUBNER Blockhaus Bh7070Ta2L

1/100
(1/150)
x 66.6%



初. 1999/11/03
改. 2018/12/12

Pm70702L #1/2

注意打合事項

CHECK



— 切込 Cutting

- - - 山折 Fold outwards

- - - 谷折 Fold inwards

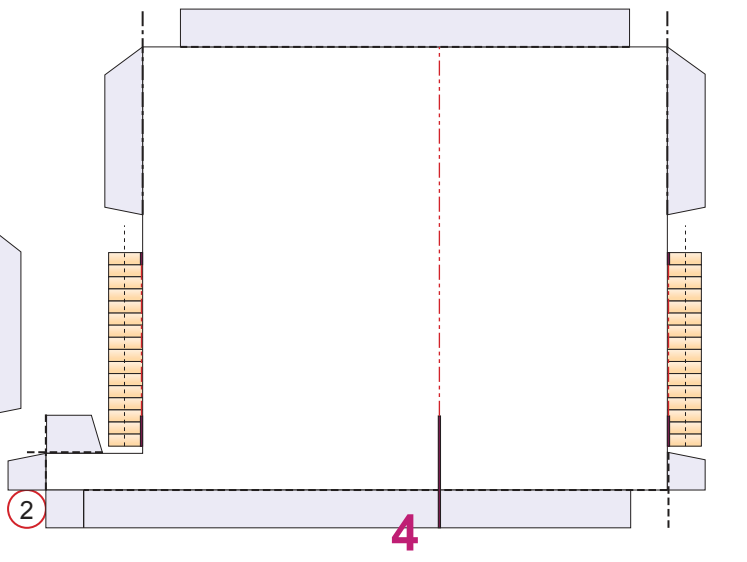
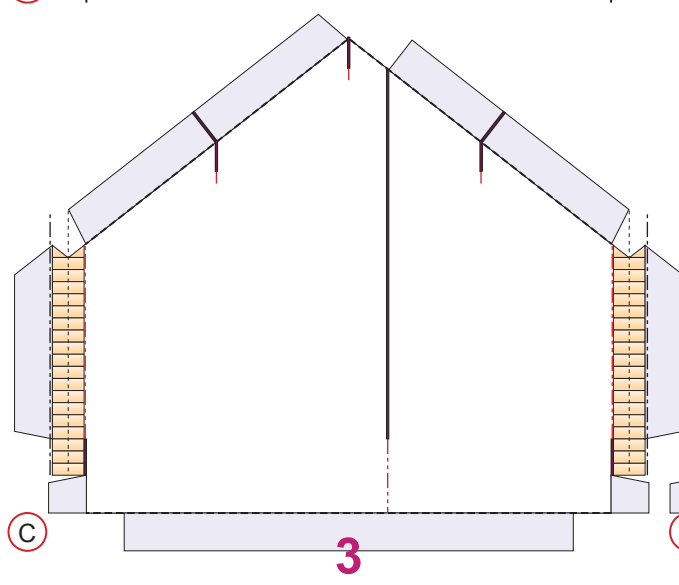
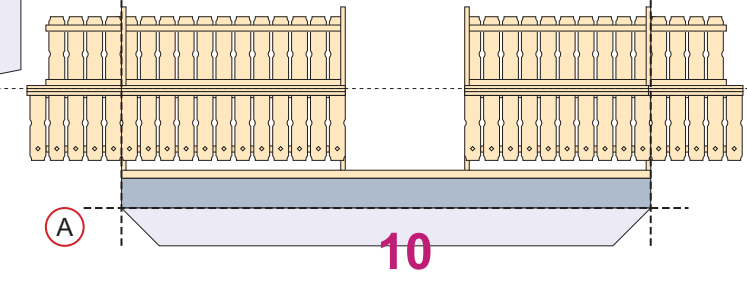
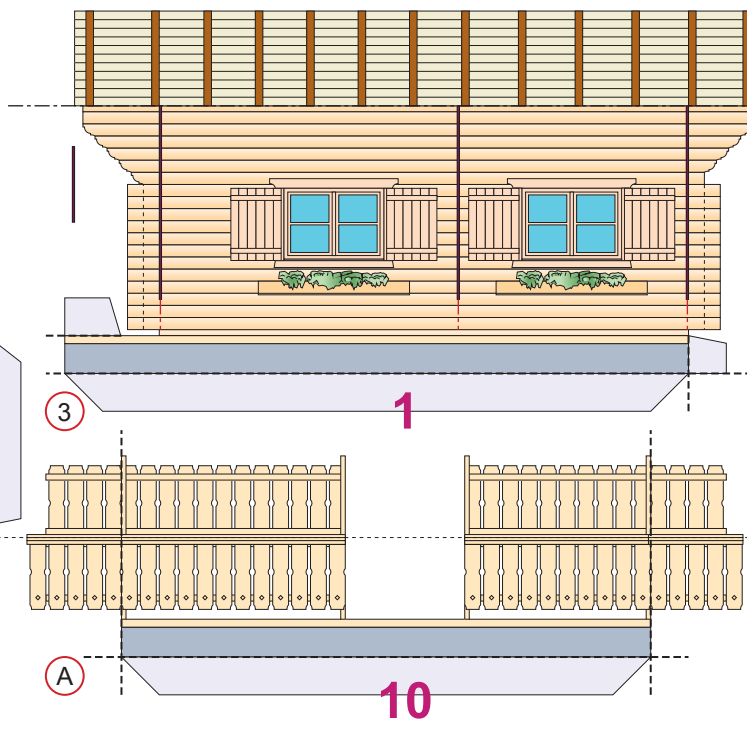
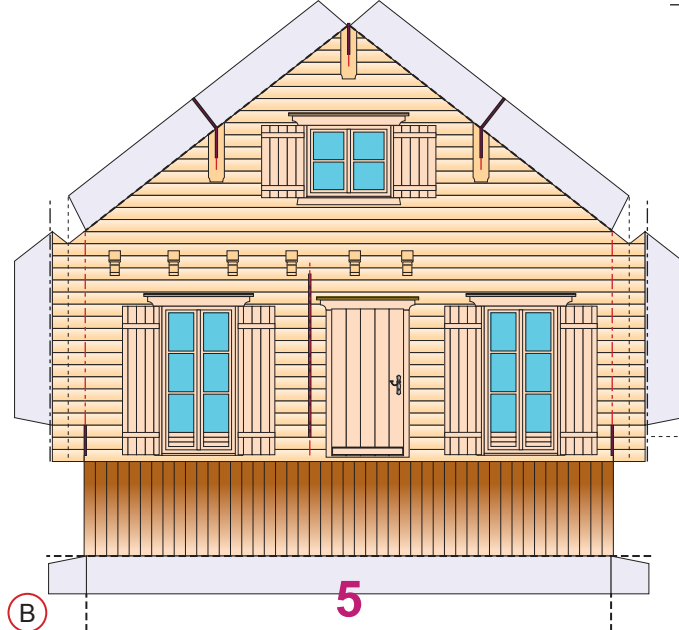
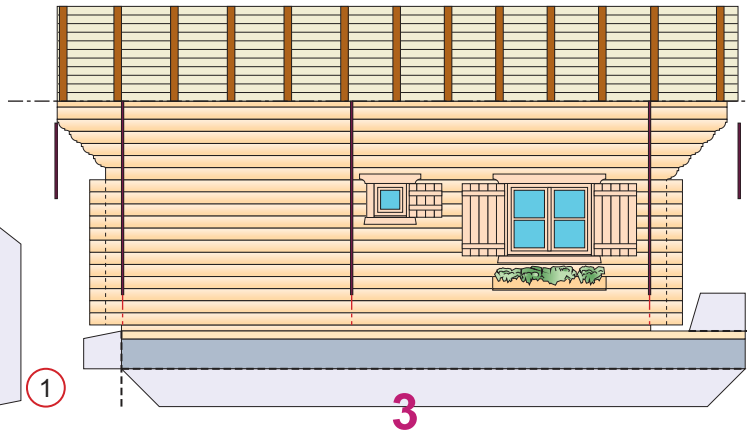
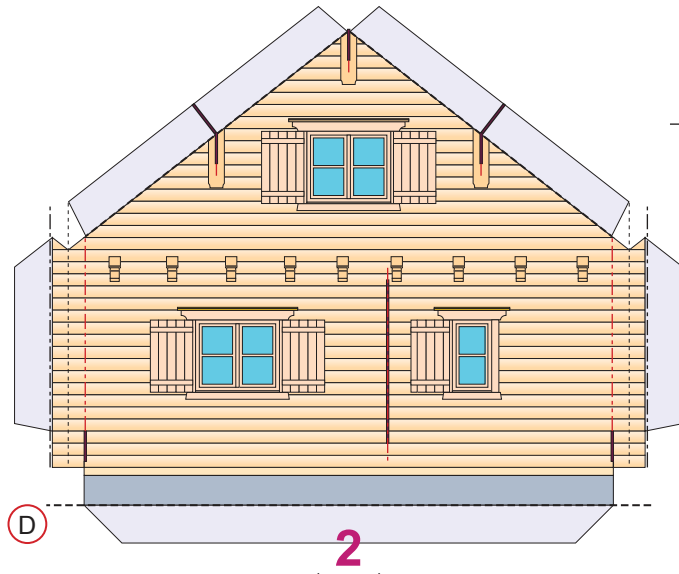
— 切抜き(紙厚分) Cut out

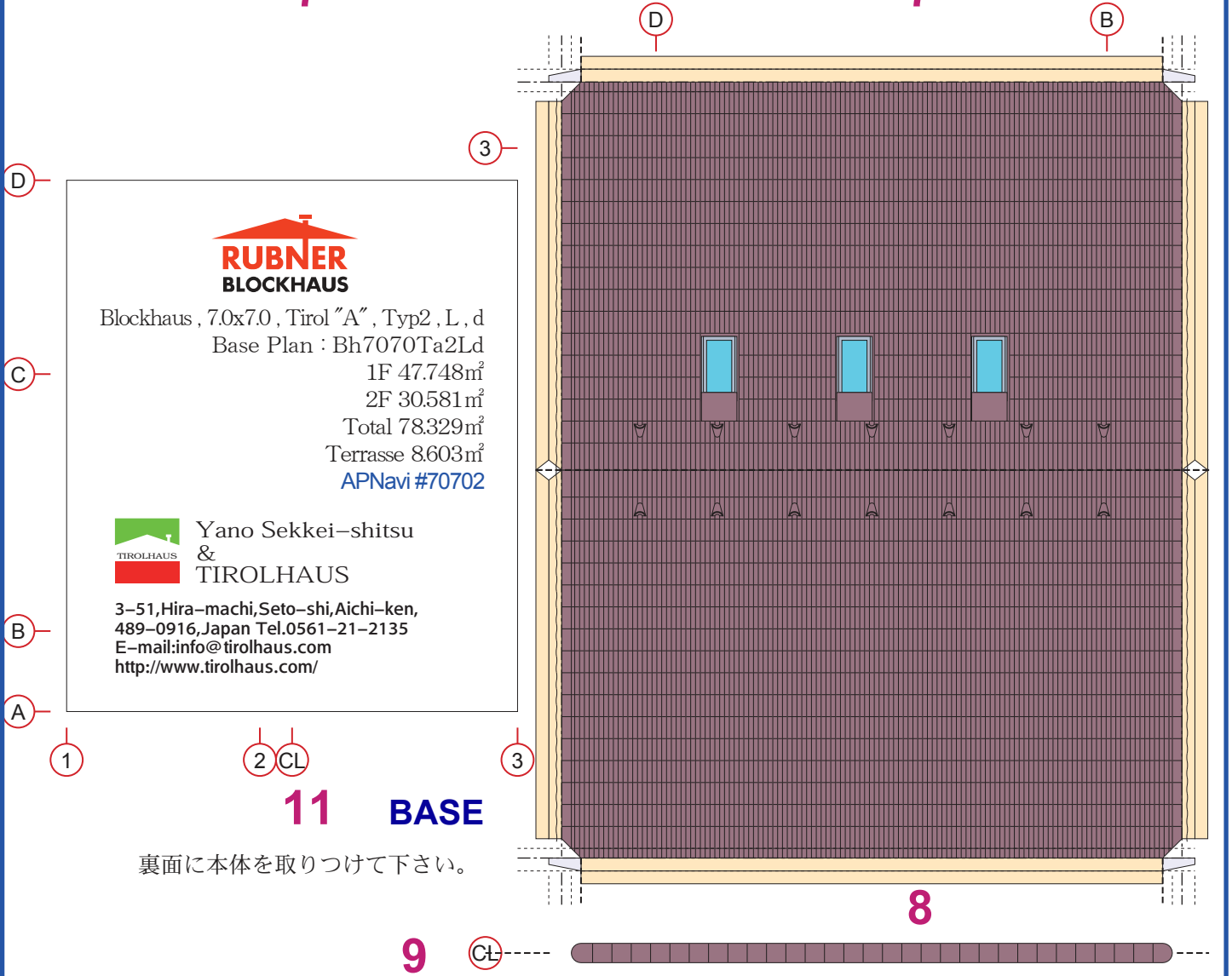
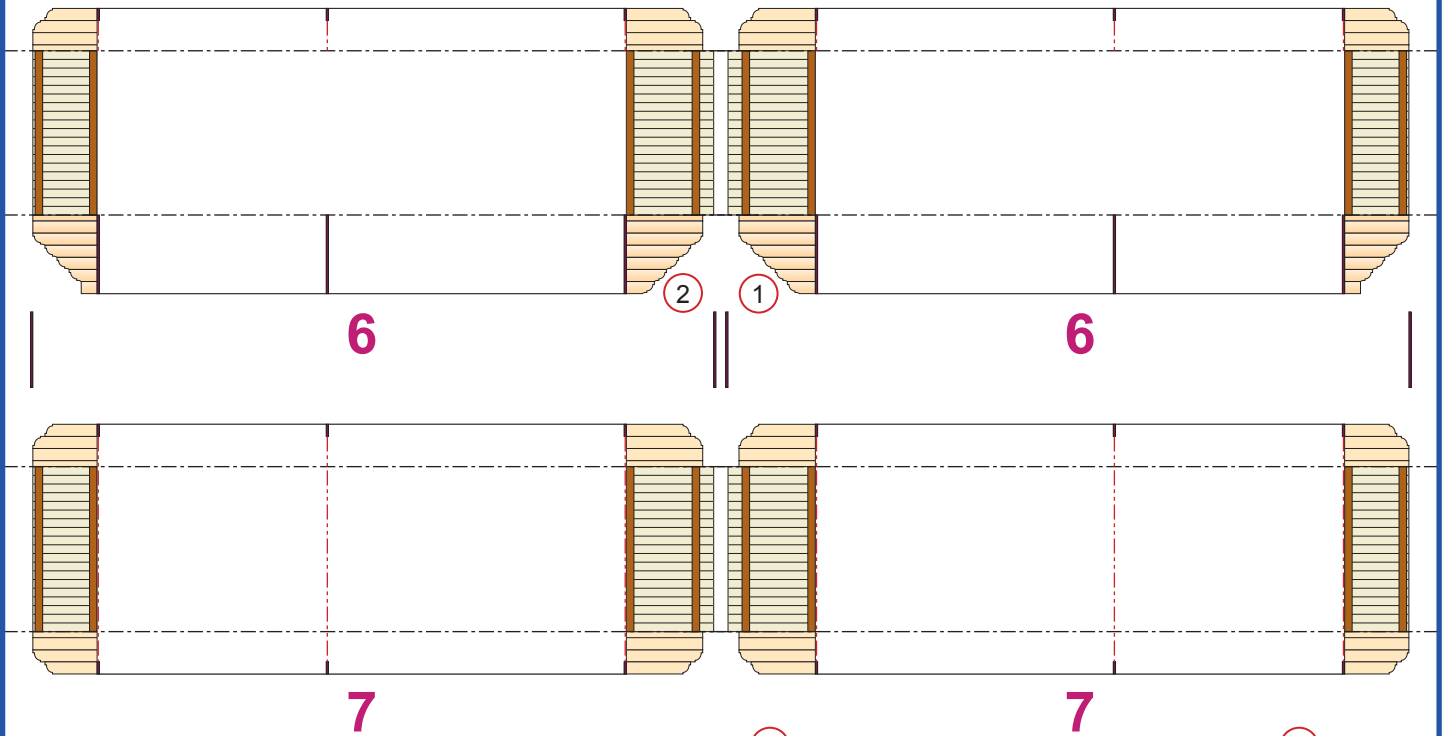
- - - 山折(180°) Fold outwards(180°)

□ のりしろ Adhesive

- - - 交差部 Cross line

※Nゲージ(1/150)製作時
紙厚=0.15~0.12mm





**RUBNER
BLOCKHAUS**

Blockhaus, 7.0x7.0, Tirol "A", Typ2, L, d
Base Plan : Bh7070Ta2Ld
1F 47.748m²
2F 30.581m²
Total 78.329m²
Terrasse 8.603m²
APNavi #70702

Yano Sekkei-shitsu
&
TIROLHAUS

3-51,Hira-machi,Seto-shi,Aichi-ken,
489-0916,Japan Tel.0561-21-2135
E-mail:info@tirolhaus.com
http://www.tirolhaus.com/

11 BASE

裏面に本体を取りつけて下さい。

9 CL

