

**PAPER MODEL SHEET**  
**RUBNER Blockhaus Bh7070Ta2R**

1/100  
 (1/150)  
 x 66.6%



初. 1999/10/24  
 改. 2018/12/12

**Pm70702R #1/2**

注意打合事項

CHECK



— 切込 Cutting

- - - 山折 Fold outwards

- - - 谷折 Fold inwards

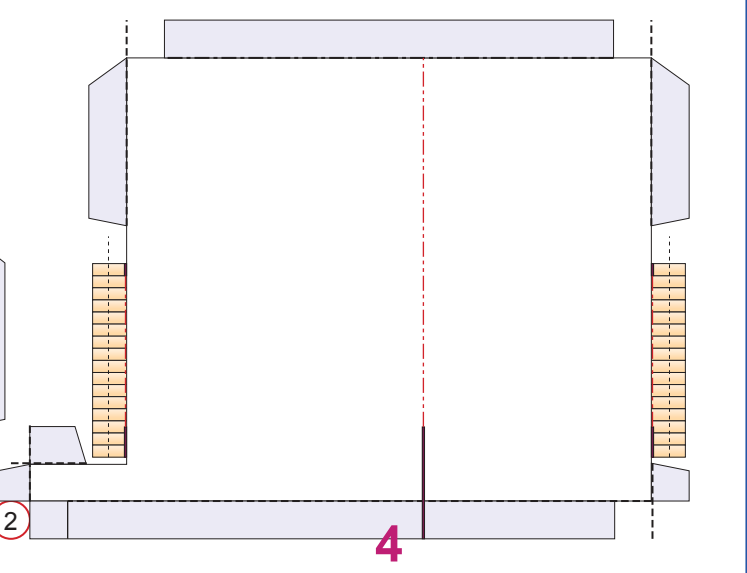
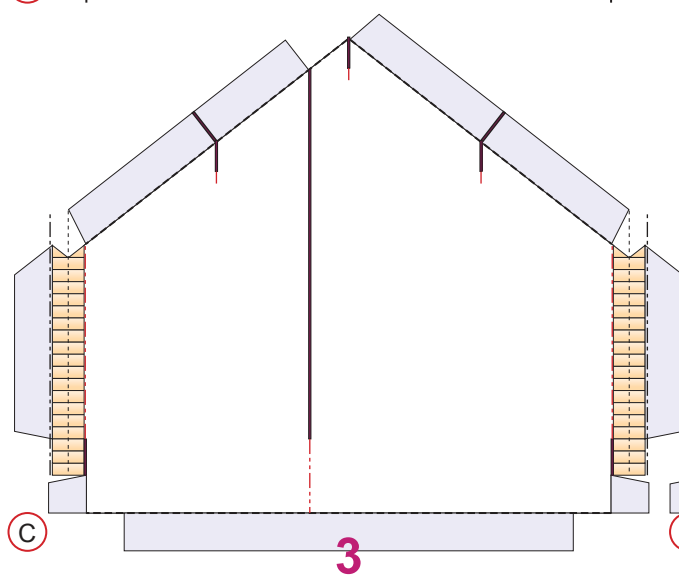
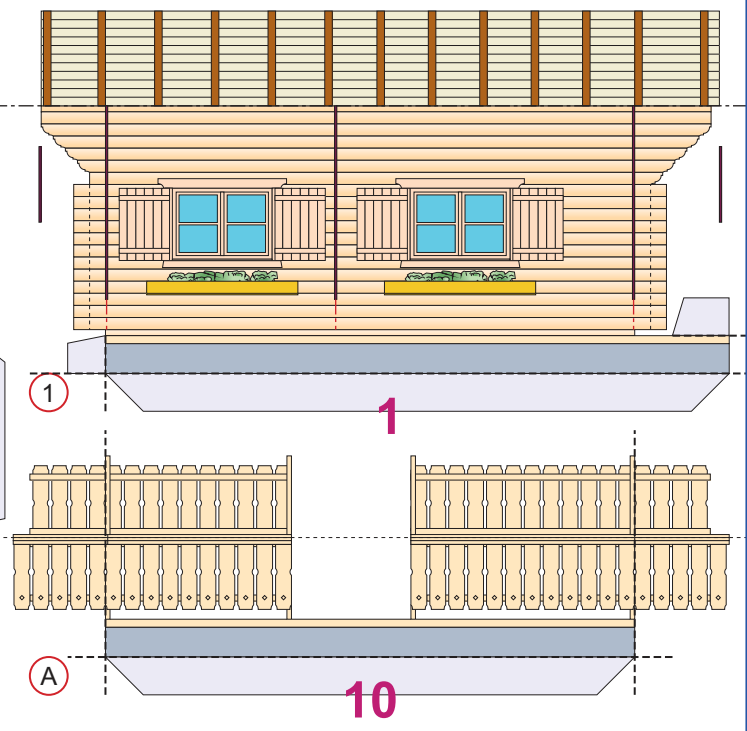
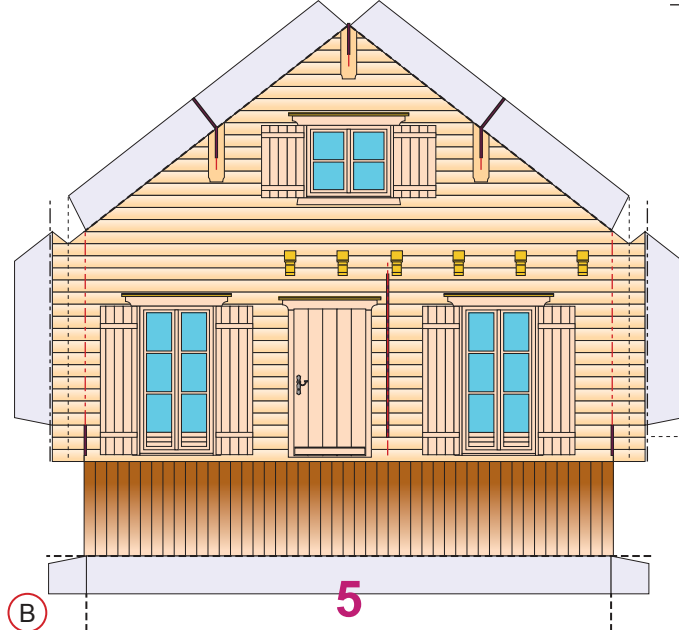
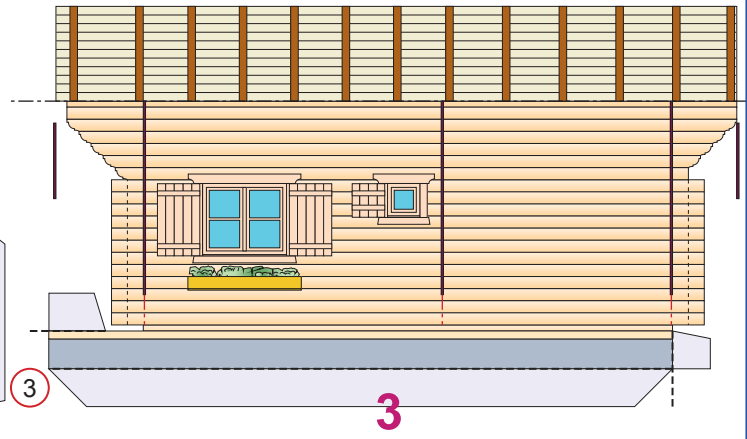
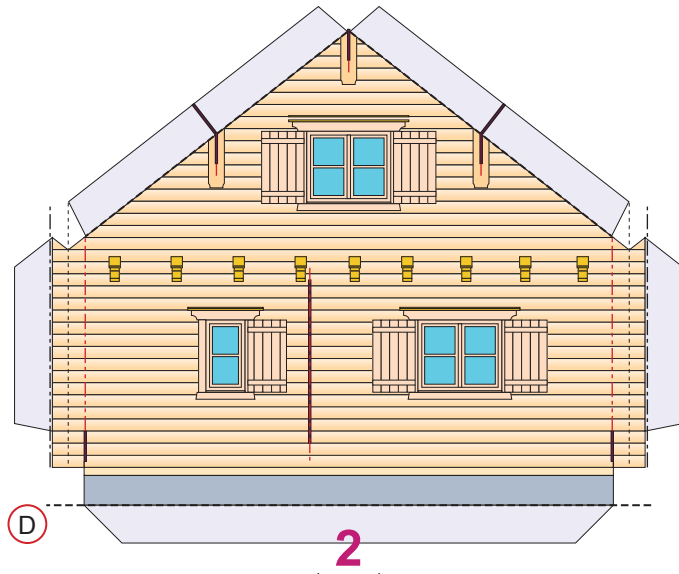
— 切抜き(紙厚分) Cut out

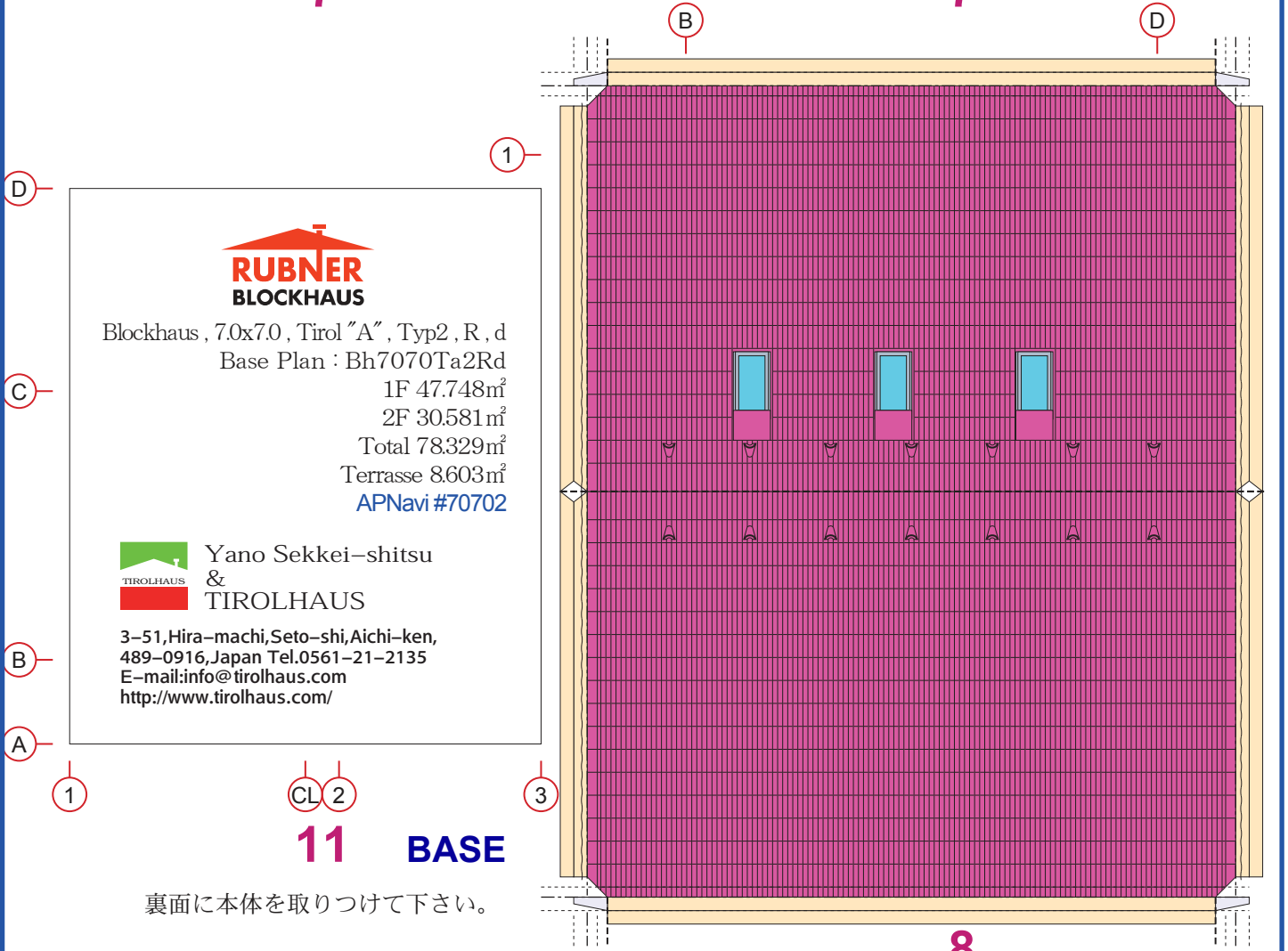
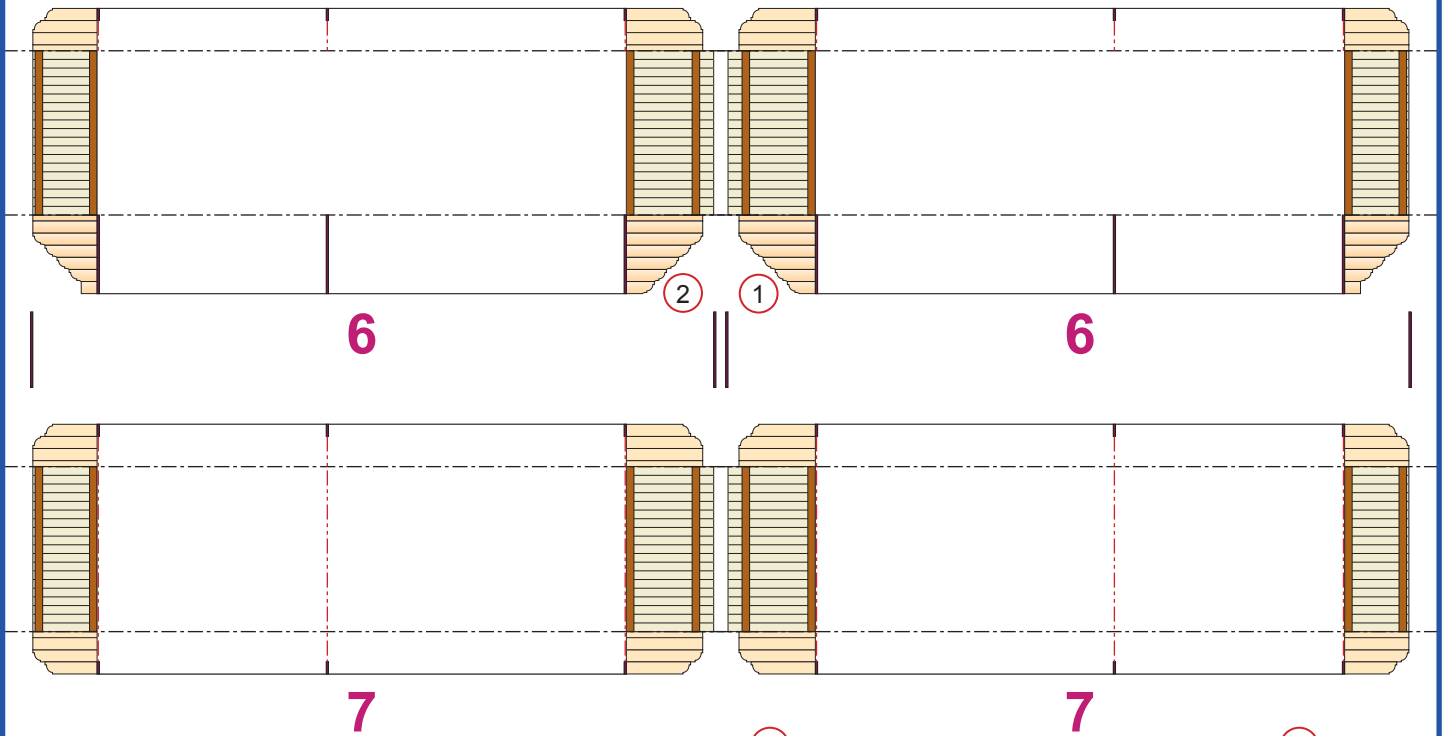
- - - 山折(180°) Fold outwards(180°)

□ のりしろ Adhesive

- - - 交差部 Cross line

※Nゲージ(1/150)製作時  
 紙厚=0.15~0.12mm





**RUBNER  
BLOCKHAUS**

Blockhaus, 7.0x7.0, Tirol "A", Typ2, R, d  
Base Plan : Bh7070Ta2Rd  
1F 47.748m<sup>2</sup>  
2F 30.581m<sup>2</sup>  
Total 78.329m<sup>2</sup>  
Terrasse 8.603m<sup>2</sup>  
APNavi #70702

**Yano Sekkei-shitsu  
&  
TIROLHAUS**

3-51,Hira-machi,Seto-shi,Aichi-ken,  
489-0916,Japan Tel.0561-21-2135  
E-mail:info@tirolhaus.com  
http://www.tirolhaus.com/

**11 BASE**

裏面に本体を取りつけて下さい。

